

LOT 4 - UPDATED BREEDING INFO



Lucy Lue 971

Consignor: Longhorn Cattle Co. - Terry R. Moore

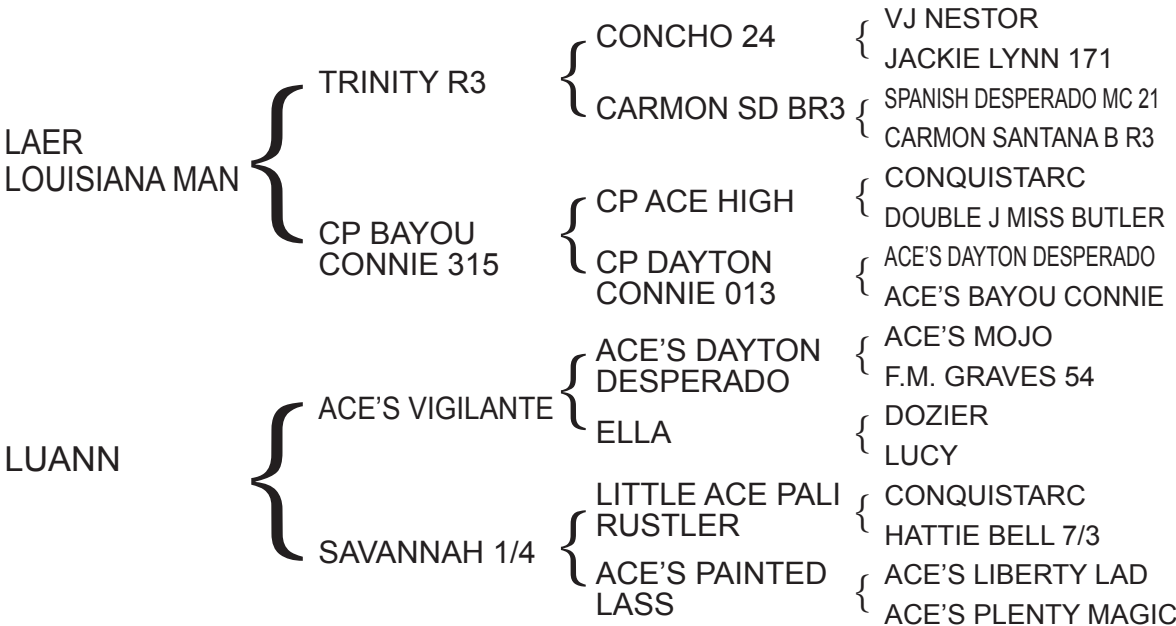
PH No. 971 TLBAA No. C322907 Born: 3/22/19

Color: Dark red body with white spot in forehead

Bangs Vaccinated (OCV): Y

Breeding Information: Exposed to Spanish Desperado MC 96 from 6/13/22 to sale.

COMMENTS: Lucy Lue was born 3/22/19 and I think my mini friends will like her. She is small, out of Luann, a really nice Ace's Vigilante daughter who has always produced well for me.



Luann, Dam

LOT 28 - CORRECTED PHOTO FOR LOT 28A



Consignor:
Thate Cattle Co.
John & Jane Thate

TC Kool Miss Sparkles

PH No. 1/21 TLBAA No. C333245 Born: 5/1/21
Color: Black speckled with white
Bangs Vaccinated (OCV): Y
Breeding Information: Not exposed.

COMMENTS: This heifer has 5 sisters that have fancy color and lots of horn. Dalgood-BLC Kulik and TC Maybelline have given us another fancy heifer. We really like her.

DALGOOD-BLC KULIK	{	BUCKAROO CHEX	{	FARLAP CHEX
		ROCKETTE'S MIJHA	{	ACE'S BETTY BUTLER
			{	ACE'S SAM
			{	DELTA ROCKETTE
TC MAYBELLINE B	{	RED BULL HR	{	MOON STONE CHEX
			{	MISS ROCKY DENIM 541
		HR ACE'S DAYTON	{	HR ACE HIGH GRAVES
			{	CP DAYTON'S BELLE



TC Kool Blue Belle

PH No. 2/21 TLBAA No. C333246 Born: 5/10/21
Color: White with brindle socks
Bangs Vaccinated (OCV): Y
Breeding Information: Not exposed.

COMMENTS: This heifer is so stacked with Butler greats. It looks like Kulik gave her a lot of color and size potential. We really like this cow line.

DALGOOD-BLC KULIK	{	BUCKAROO CHEX	{	FARLAP CHEX
		ROCKETTE'S MIJHA	{	ACE'S BETTY BUTLER
			{	ACE'S SAM
			{	DELTA ROCKETTE
SCC BOLD MOVES	{	SCC LEGEND	{	FA FIELD MARSHAL
			{	MF BLUE'S JUMBO
		SCC BOLD LADY	{	BOLD RULER
			{	MF BLUE'S JUMBO

LOT 29 - CORRECTED PHOTO FOR LOT 29A



Consignor:
Thate Cattle Co.
John & Jane Thate

TC Kool Miss Starlite

PH No. 4/21 TLBAA No. C333248 Born: 5/20/21
Color: White with black spots
Bangs Vaccinated (OCV): Y
Breeding Information: Not exposed.

COMMENTS: This heifer is double bred Delta Rockette and double bred Farlap Chex. Her mother is a long tall cow with a lot of horn. She has potential.

DALGOOD-BLC KULIK	{	BUCKAROO CHEX	{	FARLAP CHEX
				ACE'S BETTY BUTLER
		ROCKETTE'S MIJHA	{	ACE'S SAM
				DELTA ROCKETTE
BL SASSY LASSY 635	{	FARLAP CHEX	{	MONARCH 103
				DARK STAR B R3
		BL SASSY MIJHA	{	VJ TOMMIE (AKA UNLIMITED)
				ROCKETTE'S MIJHA



TC Sister Minnie Mabel

PH No. 5/21 TLBAA No. C333249 Born: 8/5/21
Color: Red
Bangs Vaccinated (OCV): Y
Breeding Information: Not exposed.

COMMENTS: This heifer has great potential. Her sire, Deacon Bill Black, has produced a very nice set of calves.

TC DEACON BILL BLACK	{	RISING STAR TH	{	DALGOOD-BLC KULIK
				EVENING STAR B R3
		HR ACE'S DAYTON	{	HR ACE HIGH GRAVES
				CP DAYTON'S BELLE
TC KOOL MABEL	{	DALGOOD-BLC KULIK	{	BUCKAROO CHEX
				ROCKETTE'S MIJHA
		TC MAYBELLINE B	{	RED BULL HR
				HR ACE'S DAYTON

LOT 35 - UPDATED BREEDING INFO



Adeline 011

Consignor: Longhorn Cattle Co. - Terry R. Moore

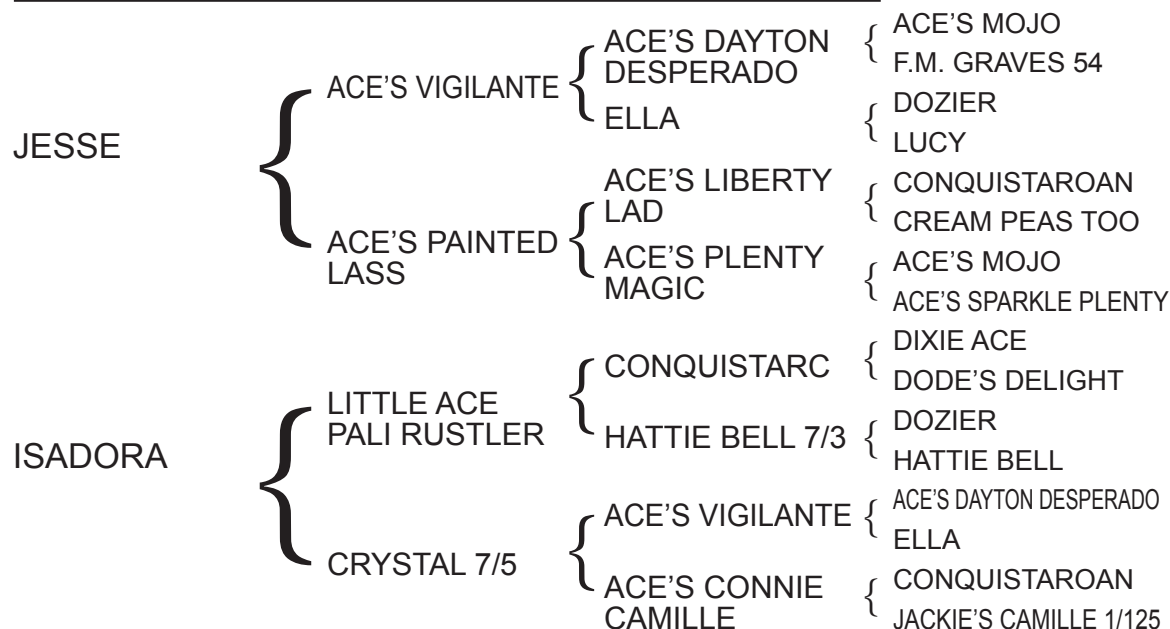
PH No. 011 TLBAA No. C270754 Born: 6/25/10

Color: White, red specks in face, sides and hips

Bangs Vaccinated (OCV): Y

Breeding Information: Exposed to Spanish Desperado MC 96 from 6/13/22 to sale.

COMMENTS: Adeline 011 is a daughter of Isadora, the really twisty horned cow I sold in the 2017 sale. This Jesse daughter has produced well for me.



Isadora, Dam

LOT 39 - LOT SCRATCHED



Georgia Denim KMD 988– Lot Scratched

Consignor: Thate Cattle Co. - John & Jane Thate

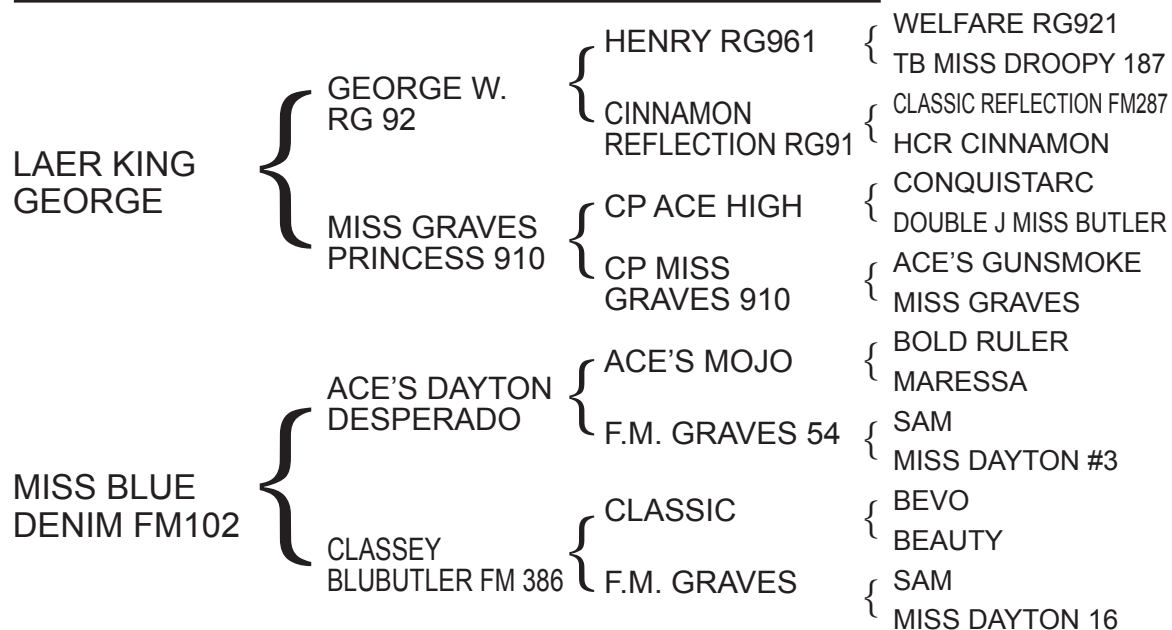
PH No. 988 TLBAA No. C279648 Born: 5/28/11

Color: Red body with white shield in forehead

Bangs Vaccinated (OCV): Y

Breeding Information: Exposed to TC Deacon Bill Black from 7/1/21 to 8/1/22.

COMMENTS: We think this cow is deserving a lot of attention. She is an own daughter of Miss Blue Denim. It is an honor to own her and an honor to sell her. Jane and I went to our first longhorn sale; it was Blackie Graves dispersal. Miss Blue Denim and her dam, Classey BluButler, made a lasting impression on us. We hope you like her.



Miss Blue Denim FM102, Dam

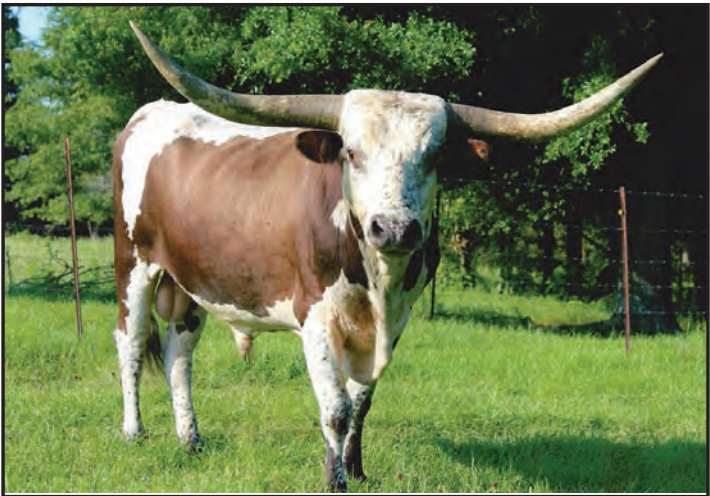
LOT 50 - UPDATED BREEDING INFO

Samantha 59

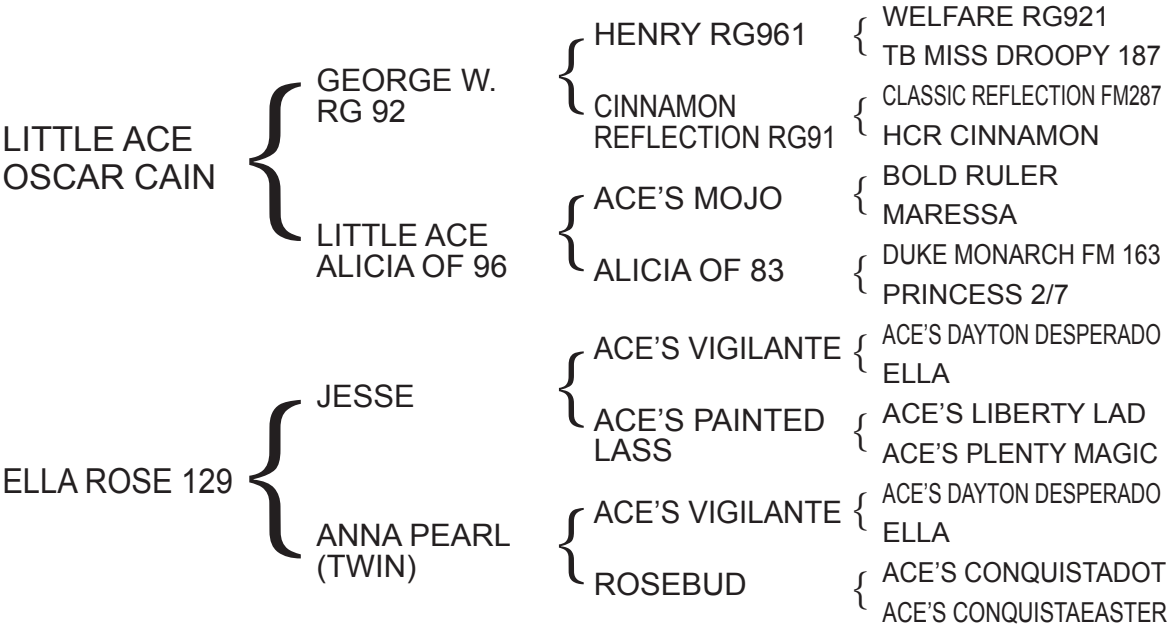
Consignor: Longhorn Cattle Co. - Terry R. Moore

PH No. 59 TLBAA No. C299504 Born: 7/11/15
Color: Parker brown , white speckled face & hips
Bangs Vaccinated (OCV): Y
Breeding Information: Exposed to Spanish Desperado MC 96 from 6/13/22 to sale.

COMMENTS: Samantha 59, a beautiful Parker brown speckled cow, is a Little Ace Oscar Cain daughter.



Little Ace Oscar Cain, Sire



LOT 51 - UPDATED BREEDING INFO



Bobbie Jo 502

Consignor: Longhorn Cattle Co. - Terry R. Moore

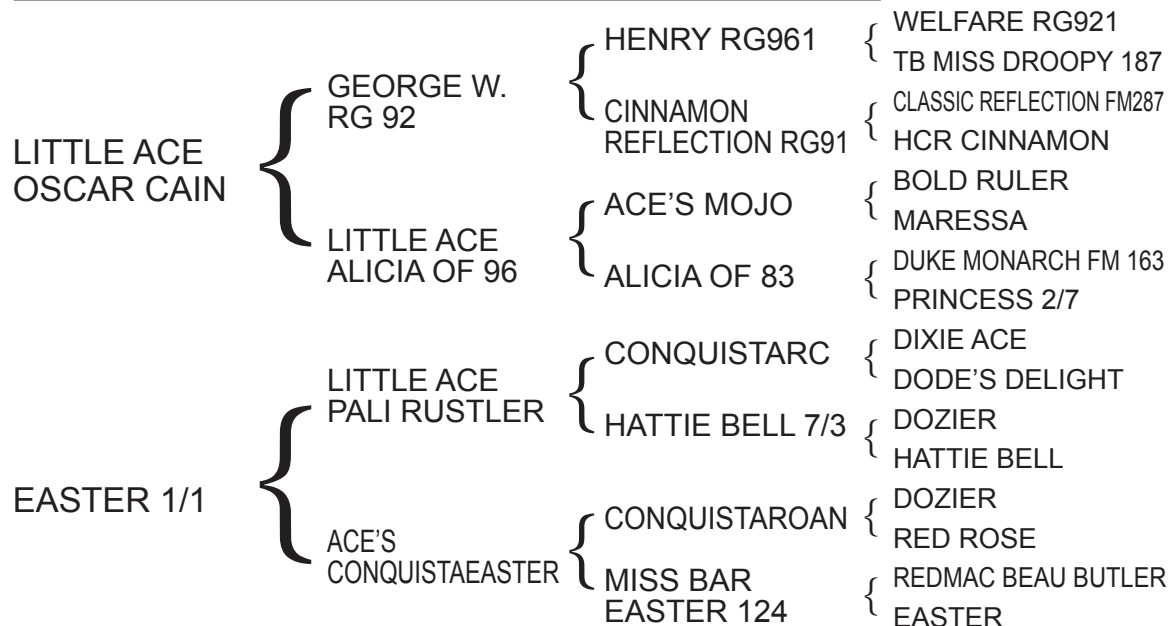
PH No. 502 TLBAA No. C299506 Born: 9/29/15

Color: White, red ears & muzzle, speckled face & sides

Bangs Vaccinated (OCV): Y

Breeding Information: Exposed to Spanish Desperado MC 96 from 6/13/22 to sale.

COMMENTS: Bobbie Jo is a special cow, a little Ace Oscar Cain daughter out of my favorite cow Easter. She's a beautiful young cow with lots of potential.



Easter 1/1, Dam

LOT 66 - UPDATED BREEDING INFO

Georgia 815

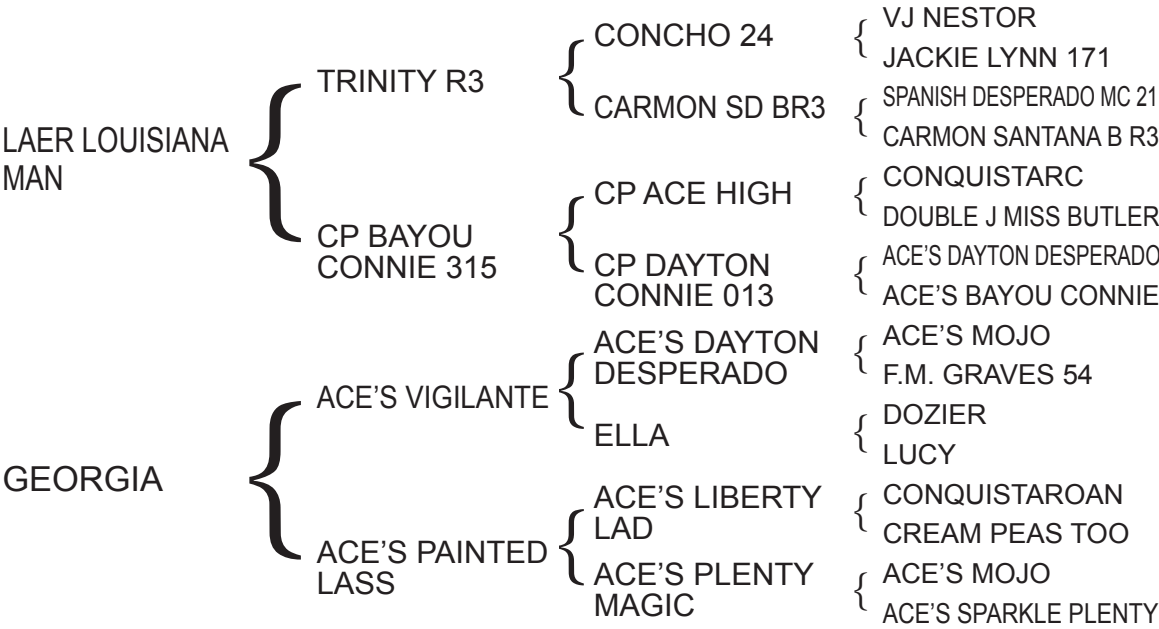
Consignor: Longhorn Cattle Co. - Terry R. Moore

PH No. 815 TLBAA No. C310822 Born: 7/18/17
Color: White, red speckled
Bangs Vaccinated (OCV): Y
Breeding Information: Exposed to Little Ace RVR Ramrod from 6/15/21 to 9/15/21. Exposed to Spanish Desperado MC 96 from 6/13/22 to sale.

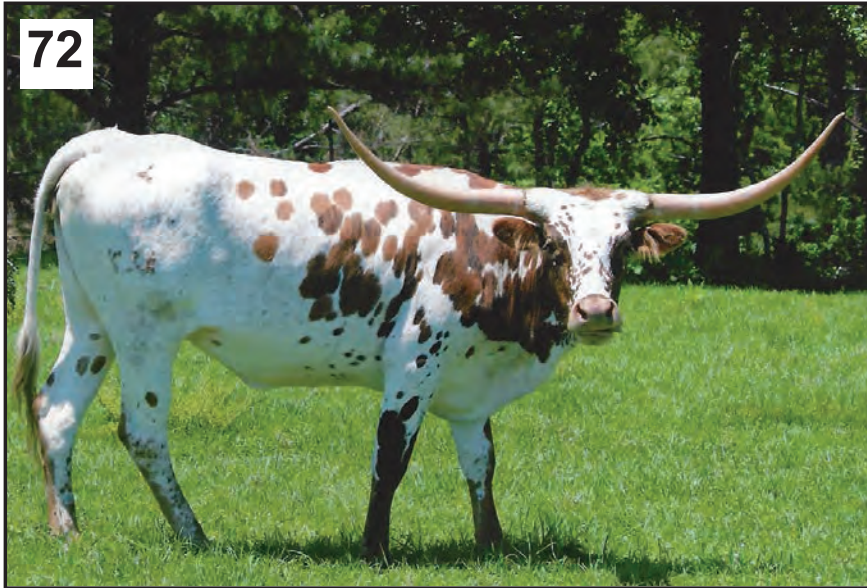
COMMENTS: Georgia 815 is a LAER Louisiana Man daughter out of Georgia, one of my last Ace's Vigilante daughters. A nice young cow.



Georgia, Dam



LOT 72 - UPDATED BREEDING INFO

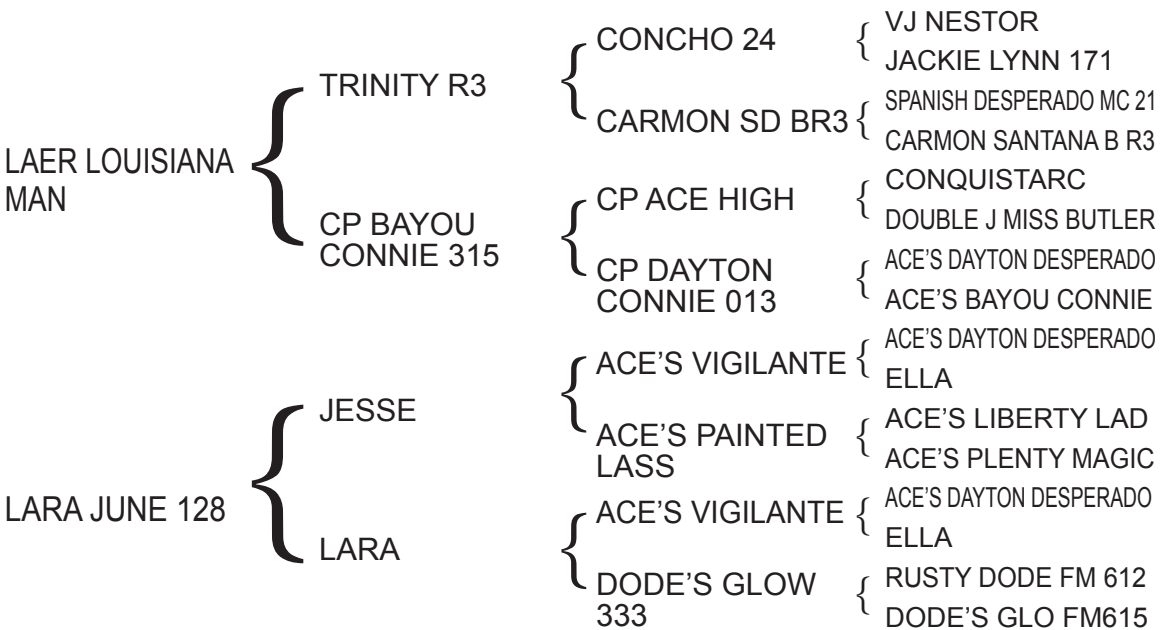


Chanel 827

Consignor: Longhorn Cattle Co. - Terry R. Moore

PH No. 827 TLBAA No. C316259 Born: 3/1/18
Color: White body with red speckled face, sides and lower legs
Bangs Vaccinated (OCV): Y
Breeding Information: Exposed to Spanish Desperado MC 96 from 6/13/22 to sale.

COMMENTS: Chanel is a LAER Louisiana Man daughter out of Lara June, a beautiful Parker brown cow. Chanel is a beautiful, young cow with lots of potential.



Lara June 128, Dam